



WILDERNESS EXPERIENCE

BUSH - OCEAN - ESTUARY



Photograph supplied by Chris Ovens.

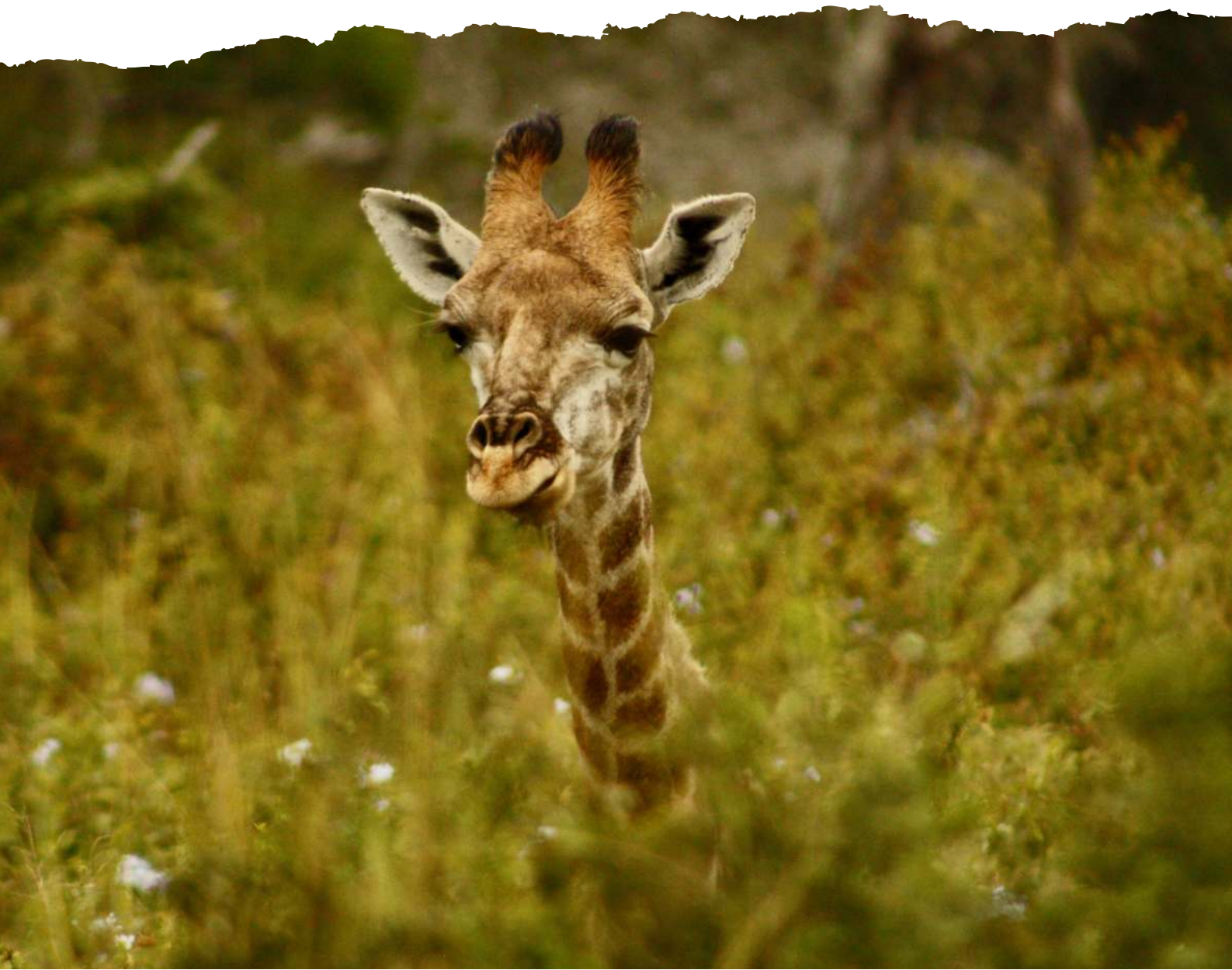
VOLUNTEER PROGRAMME

The Sibuya Wilderness Experience offers volunteers the unique and exciting opportunity to get hands-on experience in the conservation efforts of Sibuya Game Reserve.

We are a team of passionate conservationists working tirelessly to save our endangered and threatened wild and marine life from extinction. Volunteers will take part in short and long-term projects which are intended to create sustainability for generations to come. Tasks may vary from physical work to interesting and interactive lecture-based content. Our volunteer programme will run for a minimum of 1 week to a recommended 2-4 weeks.

Together with the team, the volunteers will be accommodated and hosted at the beautiful Intaka Bird Lodge (situated close to the Reserve). A happy family atmosphere, expansive grounds to explore and a large swimming pool with BBQ area make it the perfect spot to relax and unwind from the adventures of the day. Participants will share comfortable twin-bedded rooms with en-suite bathrooms, including full board (3 meals a day).

Single private rooms are available on request at an additional cost.



PACKAGE INCLUDES

- Transfers to and from Port Elizabeth Airport
- Shared double twin-bedded rooms en-suite
(private rooms are available on request at an additional cost)
- Complimentary WiFi in public areas around the lodge & bedrooms
- Breakfast – continental
- Lunch – either lodge meal or packed if out in the bush or coastline
- Dinner – 2 course meals
- National Park entrance fees and conservation levy's
- Daily activities – see itinerary
- Advanced wildlife guide per 10 students
- Conservation module booklets
- Conservation certificates
- Laundry facilities
- Complimentary T-shirt



PACKAGE EXCLUDES

- Medical and travel insurance
- Items of a personal nature
- RAID skipper course (applicable to programmes 3+ weeks)
- Gratuities

PROGRAMME CONTENT



BOAT CRUISE & FISH TAGGING

Volunteers will go on a boat cruise and partake in the oceanographic research institute's cooperative fish tagging project. Each participant will be briefed on how to safely catch, tag, record information, and release estuarine fish species.

Fishing rods will be supplied for each individual to practice the above procedures. Our findings will be loaded onto the ORI international data base.

ORNITHOLOGY

Our PowerPoint presentation covering the unique biodiversity of Sibuya's birdlife sets a great platform for being able to correctly identify and differentiate between oceanic, estuarine, arboreal, and terrestrial birds. Students will take part in our bird species count.



ELEPHANT IDENTIFICATION

We spend the day learning about African elephants and their role in the ecosystem as well as the challenges they face on earth.

We set out to correctly identify each elephant on Sibuya Game Reserve as well as monitor their individual personality.



RHINO CONSERVATION

We spend the day learning about White Rhino and their role in the ecosystem as well as the challenges they face on earth.

We set out to correctly identify each rhino on Sibuya Game Reserve as well as monitor their individual personality.



FENCING

Correct fencing has a vital role in wildlife conservation by protecting humans from potential danger and at the same time protecting conservation areas from human impact.

Volunteers take part in maintaining fence lines by checking electrical currents, checking for damage and patrolling for snares.



ALIEN PLANT ERADICATION

Many conservation areas take ongoing action by removing alien plant species that thrive in their conditions. These species are generally unpalatable for animals and outgrow indigenous plant species.

Volunteers will take part in clearing out all alien invasive species.





LION CONSERVATION

Wild lion populations throughout Africa are on a rapid decline while canned lion populations are on the rise. Volunteers will take part in a PowerPoint presentation and open discussion troubleshooting the loss of prey species, loss of habitat, lion bone trade, and human encroachment all contributing to the possible extinction of Africa's apex predator.

ROCKY COASTAL SHORES

The rocky shoreline of the Sunshine Coast plays a vital role in the biodiversity of Sibuya Game Reserve. Volunteers will spend time learning about the living and non-living features of the coastal marine environment. Our rocky shores content also includes the world-renowned Alexandria Dune Trail, which is home to the highest wind-driven sand dunes in the Southern Hemisphere.



ADDO ELEPHANT NATIONAL PARK

Volunteers will spend a day visiting the Eastern Capes flagship game reserve – Addo Elephant National Park.

Addo houses the densest population of African elephants per square kilometer and holds a mammoth section of conservation history for our area.



INTERNATIONAL SKIPPER LICENSE

Conservation volunteers have the option of attaining their inshore skipper's license from world-renowned dive master Keryn van der Walt who operates RAID Southern Africa.

(applicable to programmes 3+ weeks)



OUTREACH PROJECTS

Volunteers may take part in outreach project day in Kenton-on-Sea.

These projects include blankets and beanies for Madiba, soup kitchens, wheelchair distributions, stand-in teachers, beach cleanups, dog food distributions, visiting retirement homes, and many more.



STARRY NIGHTS

The South African night sky leaves much to be desired as so many constellations are made visible by our minimal light pollution.

Volunteers take part in the star gazing presentation as well as group projects on selected constellations.



ITINERARY - WEEK 1



**DAY 1
SUNDAY**

Arrival at Sibuya

Volunteers settle into their accomodation



**DAY 2
MONDAY**

Welcome presentation

Elephant monitoring

Elephant conservation presentation



**DAY 3
TUESDAY**

Rhino conservation presentation

Rhino monitoring



**DAY 4
WEDNESDAY**

Fence management

Intensive flora clearing



**DAY 5
THURSDAY**

Birding count

Ornithology presentation



**DAY 6
FRIDAY**

Community outreach

Trip to town



**DAY 7+8
SATURDAY/SUNDAY**

Leisure time

ITINERARY - WEEK 2



**DAY 9
MONDAY**

Lion conservation
presentation

Lion monitoring

Buffalo darting +
management



**DAY 10
TUESDAY**

Alexandria dune trail 7km

Coastal dune forest

Rocky shores



**DAY 11
WEDNESDAY**

Kayaking expedition 15km



**DAY 12
THURSDAY**

ORI fish tagging

Boat cruise



**DAY 13
FRIDAY**

Trip to
Addo Elephant National Park



**DAY 14
SATURDAY**

Group project presentations

Graduation ceremony



**DAY 15
SUNDAY**

Team breakfast

Departure




WHAT TO PACK

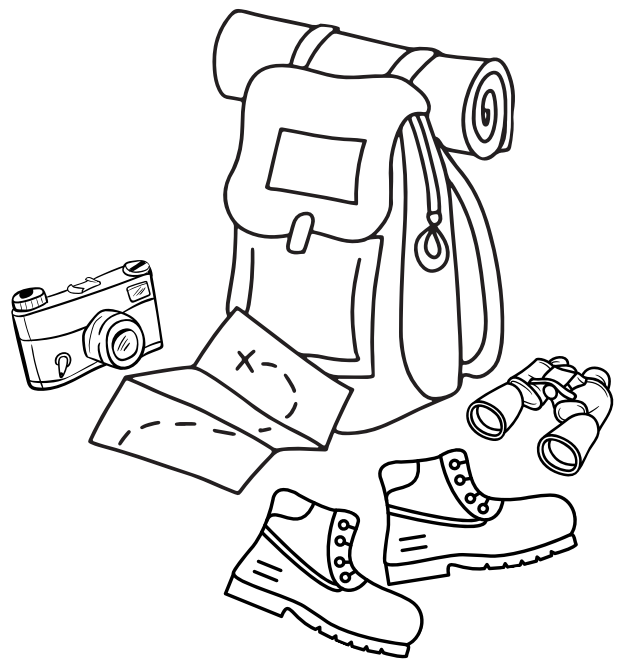
GENERAL

- ☐ Toiletries
- ☐ Relative supply of any personal medication as required
- ☐ Personal first aid kit
- ☐ Rehydrate powder or drinks
- ☐ Sunscreen (with a high SPF)
- ☐ Beach towel
- ☐ Reference books and notebooks
- ☐ Games, playing cards

CLOTHING

- ☐ Short and long sleeve T-shirts
- ☐ Short and long work trousers
- ☐ Hiking/work boots and trainers
- ☐ Sweatshirt/fleece
- ☐ Windbreaker/rain jacket
- ☐ Cap for sun all year
- ☐ Swimming costume
- ☐ Changes of casual clothes for the evening
- ☐ Underwear and socks

 Clothing should be neutral in colour and not bright for bush days. For leisure days, any colours are acceptable.



GEAR

- ☐ Binoculars - essential for the best experience!
- ☐ Daypack rucksack
- ☐ Torch
- ☐ Camera and spare batteries
- ☐ 3-point round plugs/adaptor plugs for South Africa electricity
- ☐ Sleeping bag (alternatively Sibuya can provide a sleeping bag at a rental fee of R120 per night)

TERMS AND CONDITIONS

RATES

- All prices quoted are based on EFT or online payments.
- All rates are quoted in Rands and are inclusive of VAT at 15% where applicable. Rates may be subject to change in the event of major changes to the Rand, VAT, or any other major input cost.
- Rates are quoted at per person sharing (or single on request) per week.

RESERVATIONS & PAYMENT

- Bookings made by the volunteer will be held by Sibuya for 7 days.
- Bookings must be confirmed within 7 days or such booking will automatically fall away.
- On confirmation, volunteers will be invoiced for a deposit amount of 50% to secure the reservation.
- Payment for the balance shall be invoiced 45 days prior to arrival and payment shall be made in full no later than 30 days prior to arrival.

GENERAL

- The Wilderness Experience is open for bookings. Programme starts on 17 July 2022.
- Bookings are made per week, starting on a Sunday.
- Transfer - Day of arrival: Pick up at the Port Elizabeth Airport at 15h00.
- Transfer - Day of Departure: Departing from Intaka Lodge at 09h00.
- Travelling time from the Port Elizabeth Airport to Intaka Lodge 1,5 hours.

CANCELLATION POLICY

- Cancellations: 0 to 14 days prior forfeit 100% of fee.
- Cancellations: 14 to 28 days prior forfeit 50% of fee.
- Cancellations: 28 to 42 days prior forfeit 50% of deposit.
- Cancellations: 42 to 56 days prior forfeit 25% of deposit.
- Cancellations in excess of 56 days prior may incur a maximum 5% administration fee to cover banking and handling charges.
- The Sibuya Wilderness Experience is not liable for cancellation due to flight/airport delays, sickness or any unforeseen circumstances.



IMPORTANT NOTICE

From 01 June 2015, the Department of Home Affairs in South Africa will require all passengers below the age of 18 years to travel with an Unabridged Birth Certificate. Parents travelling with children will be requested to provide an Unabridged Birth Certificate (including the details of the child's father as well as the mother) of all travelling children.

This applies even when both parents are travelling with their children and it also applies to foreigners and South Africans alike. When children are travelling with guardians, these adults are required to produce affidavits from parents proving permission for the children to travel. It is important for parents to note that Unabridged Birth Certificate applications can take anything from six to eight weeks to complete.



We disagree with any kind of interaction with wild animals and we strongly dissociate ourselves from so-called sanctuaries, parks, or rehabilitation centers that promote cub petting, lion walking, or interacting with elephants. These organizations mislead visitors to believe that they're promoting conservation while the truth is that they keep wild animals in captivity and use them for commercial exploitation.

MAKING MEMORIES

